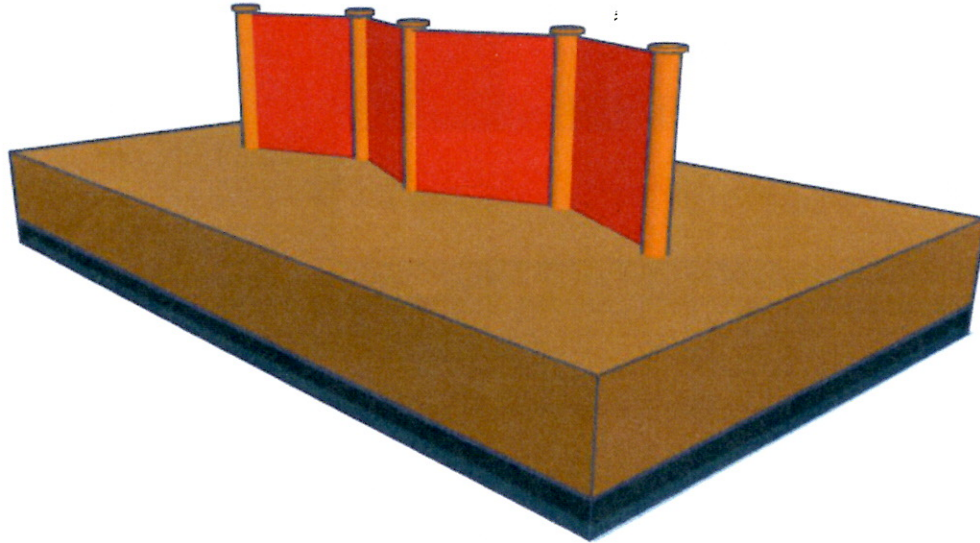


Rancho El Chorro's Traversing Wall



What is this project?

Tucked away in the hills above San Luis Obispo is the Rancho El Chorro Outdoor School; a natural preserve, a school campus, and an extraordinary learning resource for kids. Over the past 40 years, the school has impacted the lives of over 250,000 children, with thousands more on their way

As my Eagle Project, I am working to build a traversing wall to provide kids a fun and safe place to play. This wall would be four square faces outfitted with various climbing grips ranging in shapes and sizes

What will it take?

This project will take a variety of materials costing an estimated \$3000
Below is a sample of the materials being used in this project and their estimated costs

10 sheets of 3/4" Marine Plywood
\$900



Five 6" x 12' Round Peeler Cores
\$200

360lb of Quikrete
\$20



150 Climbing Holds
\$600

24 cubic yards of non-CCA treated cedar wood mulch
\$1,400



8 cubic yards of base gravel
\$400